



# Clackson Voter



THE LEAGUE OF WOMEN VOTERS OF CLACKAMAS COUNTY

JANUARY 2018

## LWVCC Leaders

### Executive Committee:

Hilly Alexander  
Marge Easley  
Emily Medley  
Nancy Murray

**First Vice President:** Lorie James

### Secretary:

Emily Medley  
**Treasurer:** Nancy Murray

### Directors:

**Voter Service:** Judi Umaki

**Program Chair:** Norma Jean Germond

### Clackson & Website:

Karan Kuntz

**Membership:** Hilly Alexander

**Action:** Marge Easley, Janice Green

**Public relations:** Linda O'Malia

### Off Board:

**Nominating Committee:** Mike Taylor

**Budget chair:** Sarah Chaplen

### Unit Leaders:

Betty Barber  
Jean Hoffman  
Katie Lu  
June Routson

## January Unit Meetings

### Welcome 2018 with Unit Meetings January 8 - 11

We have an interesting program to start the new year.

### **January Special Election on Measure 101:**

At a special election on January 23, Oregon voters will decide whether to repeal sections of HB 2391, a 2017 bill that helped to close a \$1 billion budget shortfall by expanding an existing assessment on hospitals. Besides increasing the amount hospitals pay, the bill provides a new assessment formula that would also apply to some health insurance plans and managed care organizations. A "yes" vote would allow HB 2391 to go into effect, while a "no" vote would repeal it.

League members will be provided much more complete information about this measure, labeled Measure 101, at unit meetings during the second week of January. Although the League does not endorse candidates, it does take a stand on selected ballot measures. **Based on the recommendations of the LWVOR Action Committee, who worked in support of HB 2391 during the 2017 session, the LWVOR Board recently voted to endorse a "yes" vote on Measure 101.**

### **Position Review and Program Planning:**

Those who attend the January Unit Meetings will also participate in a brief program planning session for 2018-19 and weigh in on the work of the LWVCC Positions Review Committee. Over the past several months the Committee, made up of Joan Batten, Marge Easley, Carol Radich, and Janice Green, carefully evaluated the local positions document and agreed on some potential changes to recommend to the Board and the membership. In general, the positions cover many years, and for some, time has moved on. This is your chance to give feedback and suggest areas for study or update before the Annual Meeting in May.

**For Unit locations and times, see the Calendar on page 2.  
There will be no Friday Unit.**

\*\*\*\*\*

## Dine & Discourse



Our next Dine & Discourse event will be on **January 15, 6:45 pm, at Dang's Thai Kitchen, 670 N. State Street, Lake Oswego.**

If you're distressed about today's politics, come join us as we once more combat outrage fatigue with good food and interesting discussion. We'll choose some topics from the headlines and see where the conversation leads. Please RSVP by January 13 to Libby Medley ([medleylj@gmail.com](mailto:medleylj@gmail.com)). There's plenty of space in the back room at Dang's, so the more the merrier!

## LWV of Portland Announces Measure 101 Forum

**Oregon Ballot Measure 101—Election Forum.** Please join The League of Women Voters of Portland for an election forum on Oregon Ballot Measure 101. The public and free forum will be Tuesday, January 9, 2018 from 7-8 p.m. in the Multnomah County Board Room, 501 SE Hawthorne Blvd. How Will You Vote?

The panel will include a speaker to present the factual information on the ballot measure (Peter Graven, OHSU), a speaker for the Yes Campaign (Rob Nosse, State Representative and Yes for Healthcare) and a speaker representing the opponents (TBD from opposing group).

The forum will be recorded by MetroEast Community Media. It will be available for viewing online via [www.lwvpx.org](http://www.lwvpx.org) and YouTube, as well as on the LWVOR website - [www.lwvor.org](http://www.lwvor.org).

## Lunch & Learn: Friday, January 26

**Location:** Szechuan Kitchen, 15450 Boones Ferry Rd., Lake Oswego

**Time:** 11:30 a.m.

**Cost :** \$14

**Speaker:** Kyle Hummel, Community Relations Director for the Oregon Food Bank

In this era of the food hunger crisis, most of us have heard about or connected with the Oregon Food Bank in some specific way. This will give us the opportunity to learn about the wider scope of its activities and mission. We welcome guests!

**RSVP** Karen Griffin: [karen.griffin80@gmail.com](mailto:karen.griffin80@gmail.com) or 503-635-0985

## Coming Events

### Unit Meetings: January 8-11

**Monday, January 8:** Fireside Room at Oswego Pointe (5065 Foothills Rd in Lake Oswego). Social at 5:30 pm with discussion starting at 6:00 pm. Bring a brown bag meal and a drink. Betty Barber (503-675-0594)

**Wednesday, January 10:** 3:00, Sandpiper Room, Provincial House, Mary's Woods (17400 Holy Names Drive, Lake Oswego). Jean Hoffman (503-697-0833).

**Thursday, January 11:** 9:15 at the home of Sylvia Smith (5133 SW Timbergrove St., Lake Oswego). Sylvia Smith (503-639-4272).

**Dine & Discourse: January, 15**

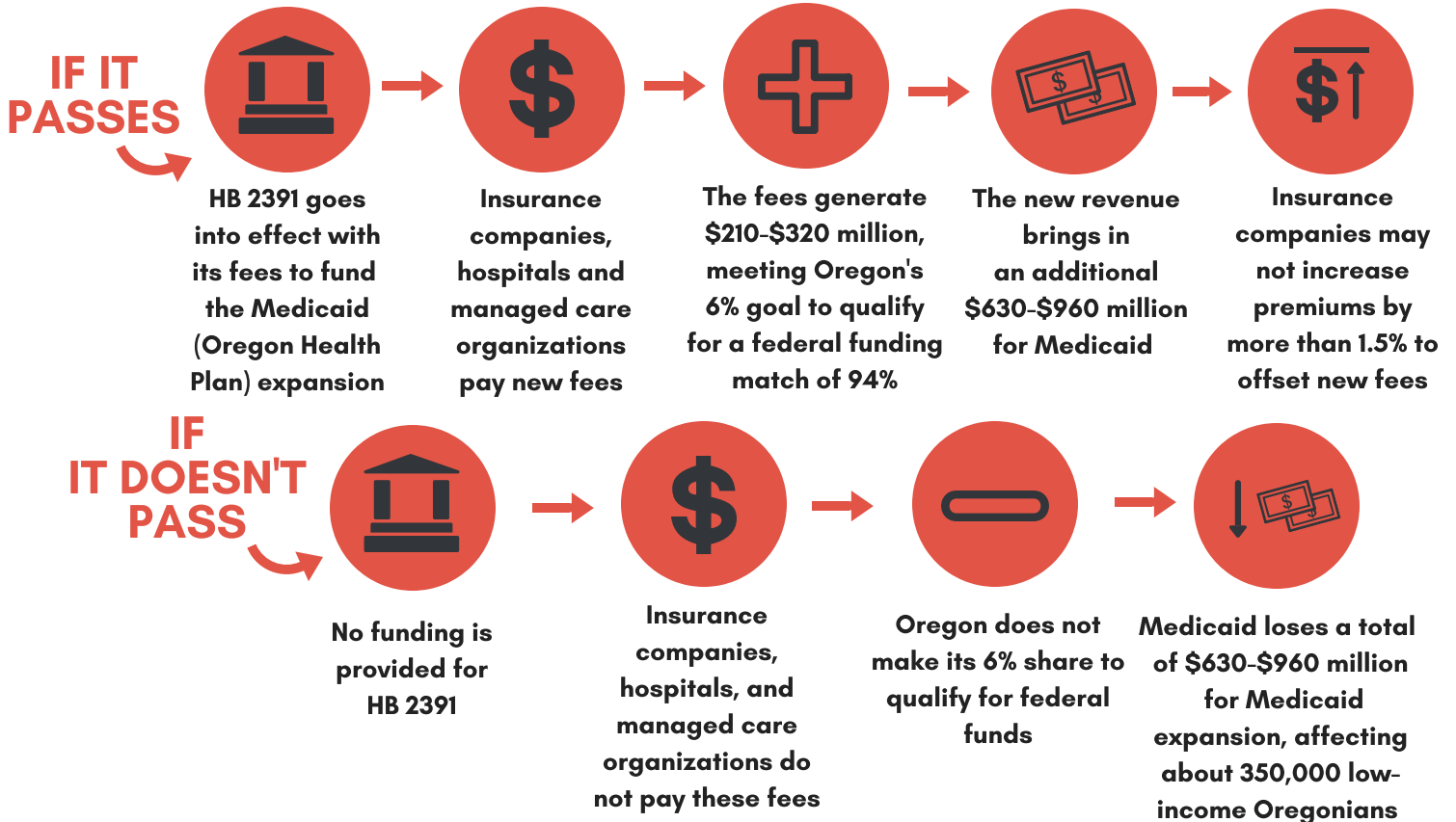
**Election Day: January 23**

**LWVCC Board Meeting: Tuesday, January 23:** 9:30 a.m. Social, 9:45 AM Meeting, Pacific West Bank, West Linn

**Lunch & Learn: January 26**

# MEASURE 101: HEALTHCARE FUNDING

## WHAT DOES IT MEAN FOR OREGON?



### SUPPORTERS SAY

Hospitals, insurers, nurses, doctors and consumer groups support this measure 

 M101 protects health insurance coverage for the 1 in 4 Oregonians who use Medicaid

With lower individual market premiums and more Oregonians insured, fewer medical bills end up unpaid, lowering premiums for everyone 


 M101 protects the 94% federal share of the funds for Medicaid

M101 protects the 210,000 Oregonians with private insurance from rising health insurance costs

### OPPONENTS SAY

Small group insurers will pay the new fees, while large insurers will not 

M101 will cost the General Fund \$37 million, depriving funds for other agencies and services

 Rejecting M101 forces lawmakers to find other ways to cut costs

M101 increases the cost of private insurance, college student healthcare plans, and plans for employers of 50 people or less

The fiscal forecasts used by supporters are speculative; we should not assume that the federal contribution will continue



THE LEAGUE OF WOMEN VOTERS  
of Clackamas County  
PO Box 411  
Lake Oswego, OR 97034  
[lwvclackamas@lwvclackamas.org](mailto:lwvclackamas@lwvclackamas.org)  
[www.lwvclackamas.org](http://www.lwvclackamas.org)

## Join the League of Women Voters!

Name(s) \_\_\_\_\_

Address \_\_\_\_\_

Phone \_\_\_\_\_

Email \_\_\_\_\_

- I am a new member.
- I am renewing my membership.
- This is a gift membership. (Please provide the recipient's contact information above.)
- I am interested in volunteering for the League. Please contact me.

Annual dues: \$70 Individual. \$105 Household. \$35 Full-time student attending an accredited institution or adult under age 35. Membership grants are available.

Total Enclosed \_\_\_\_\_

Please make checks payable to League of Women Voters of Clackamas County.

Mail to: LWVCC, PO Box 411, Lake Oswego, OR 97034